



SOUTHWEST CONCRETE PUMPING

Your Full-Service Pump Company



2323 West Oxford
Englewood, CO 80110

www.SouthwestCP.com

Metro Denver & Colorado Springs
Northern Colorado & Wyoming

TOLL FREE 888-781-7867

303-781-7867
970-330-1290

FAX 303-781-9446

KVM 34 Concrete Pump Truck Mounted Concrete Pump with 4-Section Placing Boom

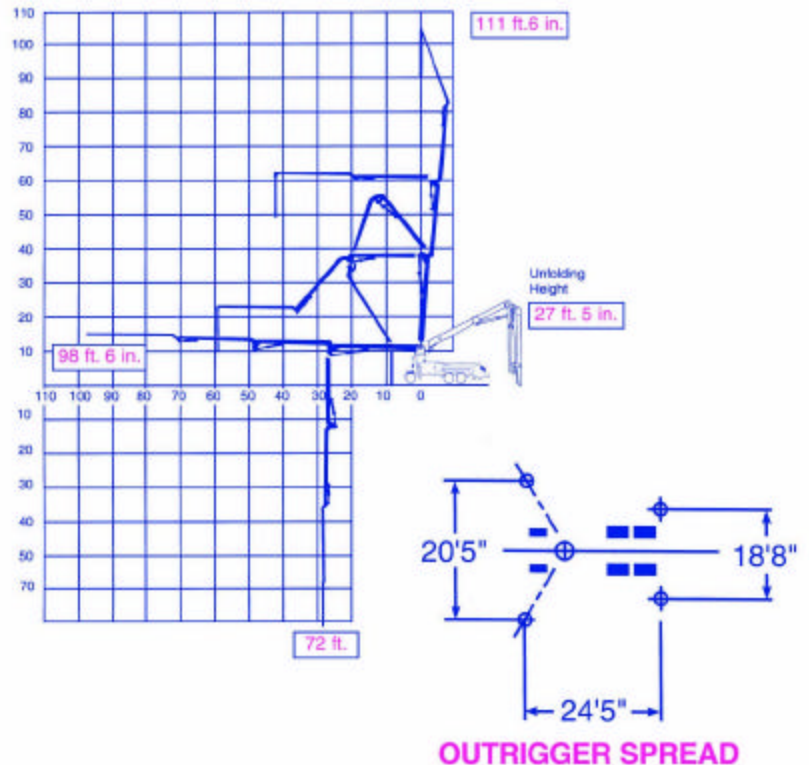
When you need a little more, this is the boom length that serves residential and commercial jobs with easy set-up, maneuverability and plenty of reach to get the job done. The KVM 34 will place concrete at over 110-feet vertically and 90-feet horizontally.

Boom Specifications	U.S.	Metric
Pipeline Diameter	5"	125 mm
Vertical reach	111' - 6"	34 m
Reach From Slewing Axis	98' - 6"	30 m
Net Horizontal reach	90'	27.5 m
Unfolding Height	27' - 5"	7.8 m

Section Lengths:

First Section	26' - 5"	8.6 m
Second Section	23' - 8"	7.8 m
Third Section	23' - 9"	7.8 m
Fourth Section	24' - 7"	8 m
Slewing Range	550 deg.	550 deg.
End hose Length	12' - 6"	4 m

Specifications are subject to change without prior notice.



Some of Southwest Concrete Pumping's Fleet:

